

4344 4344P

Age Reboot SERUM

Serum



2 x 10 ml
jumbo ampoules
30 ml dispenser



Short Description

Intensively rejuvenating anti aging treatment.

Skin type

Mature skin with first signs of aging

Description

Age Reboot SERUM reactivates skin youthfulness with Moss Stem Cells, triple Hyaluronic acid and Phyto-EGF (Epidermal Growth Factor). Moss Stem Cells promote the activity of the cell nucleus, optimize the skin's moisture balance, improve the skin's adaptability and resistance to environmental influences and refine the skin for a flawless complexion. Short- and long-chain as well as cross-linked Hyaluronic acid supply the skin intensively and deeply with moisture, reduce wrinkles and tighten the facial contours sustainably. Phyto-EGF, a vegetable signal peptide, is proven to boost the production of Collagen and Elastin, thus improving the skin's elasticity. The skin appears firmer, smoother, more even and radiates youthful freshness.

Purpose and function

- Vitalizes the skin cells
- Reduces fine lines and wrinkles
- Moisturizes
- Strengthens the skin barrier
- Protects the skin from environmental stress factors
- Improves the complexion
- Tightens the facial contours
- Improves the elasticity of the skin

Main active substances:

- **Moss Stem Cells:** innovative active ingredient from biotechnologically produced moss (*Physcomitrella patens*) that supports the vitality of cell nuclei to combat signs of skin aging. The cell nucleus contains the DNA of the cell and is involved in the regulation of essential cellular processes. Extensive studies have shown that the active ingredient from Moss Stem Cells activates genes that are responsible for the structure of the nuclear envelope and transport into the cell nucleus and are downregulated in aged keratinocytes. By improving cell nucleus vitality, the skin can better adapt to climatic and urban stress. Studies with Moss Stem Cells have shown a clear improvement in skin moisture, resistance and homogeneity after only two weeks. In addition, an anti-wrinkle effect could be proven on crow's feet.
- **Long-chain Hyaluronic acid:** high molecular weight, cannot penetrate the skin, smoothes fine lines and wrinkles.
- **Short-chain Hyaluronic acid:** low molecular weight, penetrates the skin and plumps up from within.
- **Cross-linked Hyaluronic acid:** builds a net like structure and fills in lines and wrinkles, redefines contours.
- **Phyto-EFG (Epidermal Growth Factor):** Epidermal Growth Factor growth factor obtained biotechnologically from a tobacco-like plant (*N. bethamiana*) native to Australia; the active substance acts as a signal molecule, which activates the production of Collagen, Elastin and Hyaluronic acid and provides an optical cushioning of fine lines and wrinkles. In-vivo studies have shown a reduction in wrinkle volume and depth after 28 days, improved elasticity within 14 days and physiological skin rejuvenation of 10 years within 28 days.

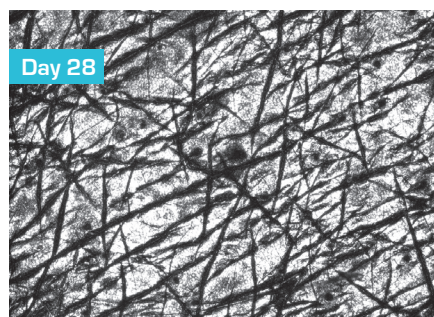
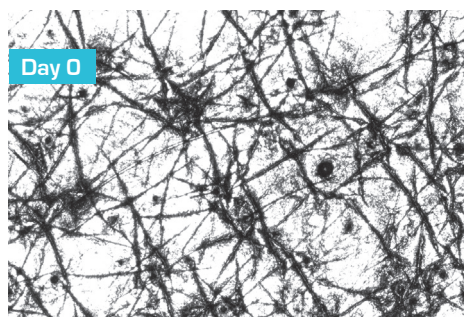
Professional Application

Apply 2-3 drops onto the face, neck and neckline and allow working in briefly. Then apply one of the following masks: **Calming Gel Mask**, **BIOCELLULOSE MASK Age Defying** or **PEEL OFF FILMALGINE® Ultra Comfort Mask**.

Home Care Application

Apply morning and evening after cleansing and before usual care.

Double blind assessment of physiological age before and after the use of Phyto-EGF.



CONCLUSION: up to 10 years (!) of physiological rejuvenation after 28 days.

Source: MCBBeauty Science